



Highway 7 NW
P.O. Box 769
Clinton, MO 64735
(888) 575-1228
www.cookauctionco.com

PRESORTED
FIRST CLASS
U.S. POSTAGE
PAID
MAILED FROM
ZIP CODE 65801
PERMIT NO. 961

CONSIGNMENTS TAKEN DAILY!

ATTENTION: ALL NEW BUYERS MUST HAVE CURRENT BANK LETTER OF CREDIT OR MUST BE KNOWN BY COOK AUCTION CO., INC BEFORE RECEIVING A BUYERS NUMBER. THANK YOU!

Live Online Bidding Powered By: **proxibid**

AUCTION

Monday October 9, 2017 - 9:00am
Clinton, MO

LOCAL INFORMATION



HOTELS

Hampton Inn - 660-885-4488
Parkfield Inn - 660-890-6188

AIRPORT

Clinton Memorial Airport (GLY)
660-885-8889
6 Miles East Of Clinton On Hwy 7
Courtesy Car Available

Trusted Technicians and Machinists
for all your Ag. and Automotive Repairs

Schultz TRACTOR
and Machine Service Inc.
Clinton, MO (660) 885-4480

This is a partial listing printed 2 weeks in advance. Some items listed on the sale bill will not be in the auction which is beyond our control. If you are coming for a specific item, please call before you come. All announcements made day of sale take precedence over printed material.

Trucking Available. Not Responsible for Accidents.
TERMS: Cash or Check with Proper ID - Day of Sale
Closed Saturday Following the Auction.

AUCTION
Monday, October 9, 2017 • 9:00 a.m. Clinton, MO

JOHN DEERE



2014 6115M Rollbar 2WD P.Quad 644 Hrs.



2008 7330 Premium C/A MFD IVT w/JD 741 Loader 3287 Hrs.



2006 6715 C/A MFD P.Quad w/JD 740 Loader 3647 Hrs.



2004 6320 C/A 2WD Syncro w/JD 620 Loader 2645 Hrs.



1999 9300 C/A 4WD w/Duals 3563 Hrs.



1997 7410 C/A MFD P. Quad 3078 Hrs.

- 2013 6140M C/A MFD 24-Spd P.Quad w/JD 640R Loader 2075 Hrs.
- 2012 6100D Rollbar 2WD P.Reverse 5622 Hrs.
- 2010 7130 Premium C/A MFD P.Quad 3647 Hrs.
- 2010 6100D Rollbar MFD P.Reverse 2000 Hrs.
- 2008 7230 C/A MFD P.Quad 3734 Hrs.
- 2009 7830 C/A MFD P.Quad w/Duals 4493 Hrs.
- 2007 6430 Premium C/A MFD P.Quad w/JD 673 Loader 2505 Hrs.
- 2006 5325 C/A MFD P.Reverse w/JD 542 Loader 1647 Hrs.
- 2005 7320 C/A 2WD P.Quad w/JD 721 Loader 3000 Hrs.
- 2000 6510L Rollbar 2WD Syncro w/Westendorf TA26 Plus Loader
- 1999 8400 C/A MFD Powershift w/Duals 4716 Hrs.
- 1997 8100 C/A MFD Powershift w/Duals 4053 Hrs. 540 PTO
- 1997 7610 C/A 2WD P.Quad 7800 Hrs.
- 1996 7800 C/A 2WD P.Quad w/Legend 740SL Loader & Duals 4825 Hrs.
- 1993 7600 C/A 2WD P.Quad w/BH 3226QT Loader 5895 Hrs.
- 7400 C/A MFD P.Quad
- 1994 7200 C/A MFD P.Quad w/JD 740 Loader 1725 Hrs.
- 1990 4455 C/A Quad 8583 Hrs.
- 1990 4455 C/A Quad
- 1989 4255 C/A 2WD Quad
- 1988 4250 C/A MFD Powershift w/Duals 6000 Hrs.
- 1991 2355 2WD 5130 Hrs.
- 1995 8770 C/A 4WD w/Duals 5865 Hrs.
- 1983 4450 C/A MFD Powershift 5991 Hrs.
- 1988 4050 C/A 2WD Powershift
- 1984 4850 C/A MFD w/Duals 7923 Hrs.
- 1982 4840 C/A w/Loader & Duals
- 1980 4440 C/A Quad
- 1980 4240 C/A Quad
- 1970 4020 D Console
- 4300 Rollbar MFD Hydro w/Loader & Belly Mower 1580 Hrs.
- 1969 1520 G
- JD 2520 Gas W.F.
- 1966 2020 Gas

CASE/CASE IH/INTERNATIONAL



2012 CaseIH 215 Puma C/A MFD CVT 1540 Hrs.



2011 CaseIH 140 C/A MFD Powershift w/CaseIH L750 Loader 2116 Hrs.



1987 CaseIH 7110 C/A 2WD w/Duals 5308 Hrs.

- 2011 CaseIH Puma 215 C/A MFD CVT 2270 Hrs.
- 2010 CaseIH Maxxum 120 C/A MFD Powershift w/Loader 1900 Hrs.
- 2010 CaseIH Farmall 95 C/A MFD w/CaseIH L730 Loader 820 Hrs.
- 2005 CaseIH JX1090U C/A MFD

PRE-AUCTION WEEKEND HOURS
Sat. October 7, 8am-4pm • Sun. October 8, 12pm-4pm

- CaseIH MXU130 C/A MFD Powershift w/Loader
- IHC 686 D w/New CaseIH L360 Loader
- IHC 1466 C/A w/Loader
- IHC 1066 w/Loader
- IHC 584 D 2WD w/Loader
- 1976 IHC 364 D 2WD
- 1961 IHC 240G 2WD Fender
- 1957 IHC 450 G W.F. w/Farmhand F11 Loader

FORD/NEW HOLLAND



NH T4.105 C/A MFD w/NH 655TL Loader 1443 Hrs.



2007 NH TD80D C/A MFD 1415 Hrs.

- 2015 NH T6.155 C/A MFD w/NH 845TL Loader 944 Hrs.
- 2013 NH TS6.120 C/A MFD 601 Hrs.
- 2008 NH T6030 C/A MFD
- NH TD95 C/A MFD w/Loader 700 Hrs.
- 2002 NH TS110 MFD Powershift w/Quickie Q960SL Loader 2602 Hrs.
- NH TC45D Rollbar MFD w/Loader
- 1992 Ford 8730 C/A 2WD Powershift 4390 Hrs.
- 1989 Ford 7710 C/A 2WD 8121 Hrs.
- Ford TW25 C/A MFD w/Duals 3615 Hrs.
- Ford 4600 D
- Ford 7000 D C/A

MISC. TRACTORS



Kubota M135GX C/A MFD w/Kubota Loader 2381 Hrs.



1997 Agco 9435 C/A 2WD w/Duals 4187 Hrs.



1995 White 6195 C/A MFD w/Duals 4455 Hrs.

- 2014 Kubota M126GX C/A MFD Powershift 800 Hrs.
- 2001 Agco Allis 5670 Rollbar MFD w/Quickie 210 Loader 3228 Hrs.
- 2000 MF 231S 648 Hrs.
- MF Super 90 Gas M-P
- 1981 Deutz Allis 9170 C/A 2WD w/Duals 2253 Hrs.
- Deutz Allis 7120 C/A 2WD 4450 Hrs.
- AC 8010 C/A 2WD w/Duals 9874 Hrs.
- AC 185 D w/Cab
- 1984 White 2-155 C/A 2WD 6083 Hrs.
- White 2-105 C/A 7800 Hrs.
- White 120 C/A 2WD w/Duals 4200 Hrs. One Owner

LAWN & GARDEN

- 1996 Cub Cadet 7275 MFD 2-Post
- JD X540 Lawn Mower

COLLECTOR ROW

- JD 4020 LP W.F. Console
- JD 5020 C/A w/Duals
- Case 930 D Wheatland
- MM 12-Shank PT Chisel

INDUSTRIAL EQUIPMENT

- Kawaski 65ZV-2 C/A Wheel Loader 2914 Hrs.
- Mustang ML48T C/A Telescoping Wheel Loader 3814 Hrs.
- 2005 Case 570MXT ROPS MFD w/Loader & 3pt Box Blade
- JD 60D Mini Excavator 2055 Hrs.
- 1995 Timberjack 450C Log Skidder 7081 Hrs.
- Case 588G 4WD Forklift 2776 Hrs.
- Case 588G 2WD w/Cab 5685 Hrs.
- JD 480 Gas Forklift



AUCTION

Monday, October 9, 2017 • 9:00 a.m. Clinton, MO

VIEW PICTURES AT:
www.cookauctionco.com

INDUSTRIAL EQUIPMENT (continued)



Ashland 61D Scraper
2015 Cat 246D C/A Skid Steer 390 Hrs.

Clark/Ranger GCX25 LP Forklift
Clark C500Y Gas Forklift
Reynolds 10yd Scraper
Midland M86 Dirt Scoop w/Dolly
Midland 8 Dirt Scoop w/Dolly
Eversman 2SD Dirt Scoop w/Dolly
2008 Cat 420E C/A 4WD Extendahoe 4791 Hrs.
2007 Cat 287C C/A Skid Steer 3029 Hrs.
2013 332E C/A Skid Steer 3460 Hrs.
2012 JD 326D C/A Skid Steer 1174 Hrs.
JD 325 C/A Skid Steer 800 Hrs.
2010 JD 320D C/A Skid Steer 1768 Hrs.
JD CT332 Skid Steer 5526 Hrs.
2012 Case TV380 C/A 2-Spd Track Skid Steer 1350 Hrs.
2012 Case TV380 C/A Track Skid Steer 1641 Hrs.
2012 Case TR270 C/A Track Skid Steer 831 Hrs.
1996 NH LX885 Skid Steer 624 Hrs.
Timberline Skid Steer Tree Shear w/Tilt
Skid Steer Sweeper
Schulte SRW800 7' Rock Rake 3pt
Anderson Rock Picker
Arps 730 3pt Backhoe
New MS WT Pallet Forks
New Stout XHD84-6 Brush Grapple
New Stout HD72-FB Grapple Bucket
New Stout 72-3 Rock Bucket Grapple
Stout 66-9 Brush Grapple
New Skid Steer Plates
New 12X16.5 Skid Steer Tires
New 10x16.5 Skid Steer Tires
Toreq 3pt Ditcher
Degelman LL3050 10' Box Blade Hyd Dolly
New 12' & 10' & 8' & 7' Pull Type Box Blades
Frontier 5' Box Blade
Orange 7' 3pt Tiller



2014 JD 320E Skid Steer 627 Hrs.
Kubota SVL75 Rops Track Skid Steer 1067 Hrs.

TRAILERS

Tiger 24' Tandem Axle Gooseneck
Tiger 24' Tandem Axle Gooseneck Lowboy
Tiger 20' Tandem Axle Bumper Hitch
Tiger 18' Tandem Axle Bumper Hitch
Tiger 16' Tandem Axle Bumper Hitch
Tiger 10' Bumper Hitch w/Gate

LOADERS

JD 726
JD 720 off 7410
JD 148 w/Valve
JD 148
Kubota LA1954
Koyker 645
Woods LF156
JD 741SL Loader 7230 Mts.

HAY TOOLS



2014 JD 569 Premium Net Wrap Baler 4688 Bales
1998 Vermeer 604L Net Wrap Baler 1574 Bales

2015 JD 569 Net Wrap Baler 11000 Bales
JD 468 Net Wrap Baler
2014 JD 469 Net Wrap Baler 4797 Bales
2014 JD 469 Net Wrap Baler 10214 Bales
2001 JD 567 Net Wrap Baler 8500 Bales
JD 336 Wire Baler
Vermeer 605C Baler
Vermeer 504M Classic Net Wrap Baler 5470 Bales
Vermeer 505I Baler
NH BR7090 Baler
NH 276 Baler
CaselH 8450 Baler
Hesston 4800 Square Baler
Hoelscher Bale Accumulator
Butler 1040 Bale Processor
JD 840 Bale Processor
Ag Wrap Bale Wrapper
Ag Wrap Bale Handler
Enorossi BR10 10-Wheel Rake
JD 700 Twin Rake
JD 660 Rake w/Dolly
Andex Rotary Rake
(2) NH 258 Rakes w/Dolly
NH 258 & 260 Rake w/Dolly & Hitch
Enorossi 4-Basket Tedder
2015 NH H6750 3pt Disc Mower
JD 1460 Disc Mower
JD 1360 Discbine
2013 NH H7320 Flail MoCo
NH 415 MoCo
JD 920 Haybine
NH 499 Haybine
JD 1209 Haybine
JD 1470 Discbine
1995 MacDon 1900 30' Swather



ROTARY CUTTERS

Rhino 3150-4 w/Warranty (New)
Landpride RCM3620 20'
Landpride RCR2596 8' 3pt
Bushhog 2515
Bushhog ATH900 3pt 7'
Rotary Cutter
Bushhog 7' 3pt Rotary
BMB 7' 3pt Rotary
Frontier 10' Finish Mower



DISCS



2013 JD 2623VT 29' Vertical Till
Case IH 340 22.5'
2013 JD 2623VT 26' Vertical Till
2007 CaselH 330 33' Vertical Till
JD 637 25'
JD 637 22'

JD 630
JD BWA 20'
JD BWA 10'
JD 210 15'
Case IH RMX340 25.5'
CaselH 3950 RF
CaselH 3950 25.5' Rock Flex
CaselH 496 25'
Case 20'
IHC 480
IHC 475 Hyd Fold
IHC 470
Bushhog 7' Offset
MF 520 18'
White 24' Rock Flex
Krause 1900 25'
AC 20' Hyd Fold
Sunflower 16' Offset
Sunflower G-14 Offset
Cook 16' Offset
Cook 10' Offset
IHC 500 Cutting
Oliver 12' Cutting
Shafer 8' Offset



Landpride DH3512 12' Pull Type Like New

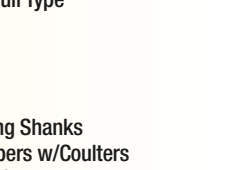
CULTIVATORS

JD 980 30' w/Harrow
JD 960 24' w/Harrow
JD 1000 24' 3pt
CaselH 4300 28' w/Harrow
Case IH 4800 24' w/Harrow
CaselH 4600 24.5' w/Harrow



RIPPERS & PLOWS

Unverferth 310 12-Row Stripper Ripper
Brillion SCP 7-Shank Ripper
JD 900 3pt Ripper
JD 714 12' Disc Chisel
JD 712 14' Disc Chisel
CaselH 6500 10' Disc Chisel
Kewanee 10' Disc Chisel
Agco Glencoe 7400 10' Disc Chisel
White 435 11' Disc Chisel Pull Type
Landoll 9' Disc Chisel
JD 915 7-Shank V-Ripper
JD 1600 10-Shank Chisel
JD 1600 3pt Chisel
DMI 2500 5-Shank 3pt Spring Shanks
(2) DMI 5-Shank In Line Rippers w/Coulters
Glencoe 12-Shank 3pt Chisel
IHC 55 10' 11-Shank 3pt Chisel
Wilrich 11-Shank PT Chisel
AC 11-Shank 3pt Chisel
JD 2700 6-BTM On-Land Plow
JD 2700 6-BTM Plow
IHC 720 6-18 On Land Plow
IHC 710 5-16 Plow
IHC 540 4-BTM Semi Plow
Ford 3-BTM 3pt Plow



PLANTERS & DRILLS

JD 1750 8-Row No-Till Vacuum Planter
JD 7200 6-Row Vacuum Planter
Ford 3pt 2-Row Planter
JD 1560 15' No-Till Drill
Pair JD 750 Drills Hyd Hitch
JD 8300 w/Grass Seed
JD 9300 Drills
CaselH 5100 SB Drill
Great Plains 15' No-Till Drill
Great Plains 14' 3pt Drill
Great Plains 13' PT Drill
IH 510 Drill



GRINDER MIXERS



Kuhn Knight 5143 Vertical TMR w/Scales
Henke-Buffalo 440 KwikMixer Horizontal TMR w/Scales

Penta 8010 Vertical TMR w/Scales
Knight 5042 Vertical TMR
Kuhn 3125 Reel Augie Horizontal TMR w/Scales
Patz V620 TMR Vertical w/Scales
Patz V615 Vertical TMR w/Scales
Patz 305 Horizontal TMR w/Scales
NH 355
NH 354

MANURE SPREADERS

Kuhn Knight 1219 Top Beater
2007 NH 185 Tandem
NH 195 Tandem
NH 190 Tandem
NH 155
Gehl MS175
Gehl 1177
New Idea Tandem Axle
New Idea 3626
Knight 1150 Pro Tandem Axle



MISC. EQUIPMENT



2012 JD RSX850T 4X4 Gator 118 Hrs.
Savage 9' Aerator Pull Type

Peck 120472 Auger
Brandt 1070 Auger
Parker Seed Wagon
Brillion PT 10' Seeder
JD 3955 2RN Chopper
JD 38 Silage Chopper
Rogator 664 C/A 4WD Sprayer 600 Gal. 60' Boom.
Rogator 554 C/A 4WD Sprayer 650 Gal. 80' Boom 4000 Hrs.
Brillion 15' PT Cultimulcher
Brillion 14' PT Cultimulcher
Great Plains Cultimulcher Attachment
Brillion 32' X-Fold Roller
Brillion 30' X-Fold Packer Like New
Brent 882 Grain Cart
Brent 1084 Grain Cart
Brent 674 Grain Cart
Killbros 475 Grain Cart
Unverferth 5000 Grain Cart
UFT 4565 Grain Cart
EZ Trail 500 Grain Cart
EZ Trail Grain Cart
JD 400 Grain Cart
Parker Tandem Grain Cart
A&L 356 Grain Cart w/Tarp
Richardton 12' Dump Wagon
Better Built 2600 Honey Wagon
Grain-O-Vator Auger Wagon
Kelly Ryan 12' Feed Wagon
Blair 10' Feed Wagon
Killbros Gravity Wagon
M&W Gravity Wagon w/Auger



Parker Gravity Wagon
DMI Gravity Wagon
Box Wagon w/Hoist
JD 20' Rotary Hoe
Crustbuster 24' Harrow
Blue Jet 12-Shank AA Applicator
DMI 4100 AA Applicator
Hardi 500 Gallon Tandem Sprayer
New Concrete 8x2.5 Feed Bunks
(2) Rhino 1540 3pt 10' Blades
JD 7' 3pt Blade
Harrowgator
Wagon 250 Gallon Fuel Tank
Killbros 30' Header Trailer
New Black 430 Header Trailer
REM 2100 Grain Vac
DMI 3pt AA Applicator
1998 GM C8500 Stahly Fer Truck No Title



LMT 2600 Honey Wagon w/Injector

HARVEST EQUIPMENT



2008 JD 9770STS C/A 2WD CM Chopper 1443/2151 Hrs.
1997 JD 9500 2WD Combine 2344/3212 Hrs.

2007 JD 9560STS C/A 4WD CM Chopper 2448/3263 Hrs.
2004 JD 9560STS C/A 2WD CM Chopper Combine w/Duals 1629/2405 Hrs.
2004 JD 9660 STS 4WD Combine 2510/4054 Hrs.
2004 9660 STS 4WD Combine 3218/4982 Hrs.
1991 JD 9500 2WD Combine 2382/3152 Hrs.
1990 JD 9400 2WD Combine 3170/4624 Hrs.
JD 7720 Combine 3500 Hrs.
JD 6620 2WD 3600 Hrs.
2004 CaselH 2388 C/A 4WD FT Chopper 2493/3655 Hrs.
Agco R72 4WD Combine 3100/4200 Hrs.
2012 JD 635F CM Flex Head
2010 JD 635F CM Flex Head
2010 JD 630F CM Flex Head
2010 JD 630F CM Flex FF Head
2002 JD 925F CM Flex Head
1993 JD 922 CM Flex Head
1998 JD 925LL Flex Head
1996 JD 925LL 25' Rigid Head
1995 JD 925LL Flex Head
JD 920 Head
2011 CaselH 3020 25' Flex Head
2009 & '06 CaselH 1020 30' Flex Head
2006 CaselH 1020 30' Flex Head
1997 CaselH 1020 30' Flex Head
1998 CaselH 1020 25' Flex Head
1997 CaselH 1020 25' Flex Head
1990 CaselH 1020 25' Flex Had
2004 CaselH 1020 20' Flex Head
1990 CaselH 1020 16.5' Head
2005 MF 8000 30' Flex Head
Agco 800 30' Flex Head
Agco 30' Rigid Head
1999 JD 893 CM Hyd Deck Plates
JD 893 CM Hyd Deck Plates
JD 693 Cornhead
JD 643 Hi-Tin Cornhead
(2) JD 643 Oil Drive Cornheads
CaselH 2206 Cornhead
CaselH 1063 Cornhead

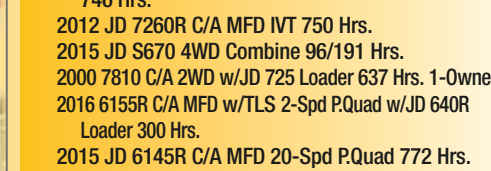
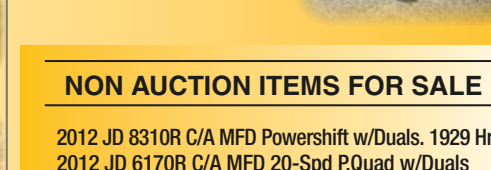
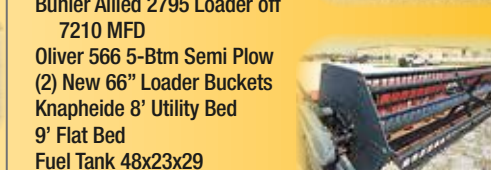


ABSOLUTE ROW



1999 4300 2WD w/JD 430 Loader 2153 Hrs.
JD 2510 Gas Synchro W.F.

JD 4020 D Synchro W.F.
JD 2210 MFD Compact MF135 Gas
2014 MF CB10 Backhoe Attachment
2004 Polaris Professional 4WD
Kubota RTV500 4WD
1973 GMC 6000 V6 Grain Truck
1970 IH Loadstar 1600 Grain Truck 80000 Miles 1-Owner
Dutchman 301 Skid Steer Tree Spade
M.A.P.E. 8' PT Box Blade
Brent 420 Grain Cart
Peerless 400 Roller Mill w/Scales
Kewanee 293 9-Shank Disc Chisel
White 12-Shank PT Disc Chisel
Glencoe 7-Shank Disc Chisel
NH 488 Haybine
Casel 1020 30' Flex Table
JD 6500 Silage Blower
BJM Mixer Wagon
JD HX15 Rotary Cutter
Bushhog 2715 Rotary Cutter
New Idea 3732 Manure Spreader
Gehl 312 Side Slinger Manure Spreader
Kewanee 14' P.T. Cultimulcher
Kewanee 10' P.T. Cultimulcher
JD 6500 Silage Blower
Buhler Allied 2795 Loader off 7210 MFD
Oliver 566 5-Btm Semi Plow
(2) New 66" Loader Buckets
Knapheide 8' Utility Bed
9' Flat Bed
Fuel Tank 48x23x29
Walingier 510 Grain Vac
CaselH 1020 30' Flex Head
IHC 1020 20' Flex Head
CaselH 1083 Cornhead
Gleaner R 6RN Cornhead
JD 643 Lo-Tin Cornhead
JD LA145 Lawn Mower



NON AUCTION ITEMS FOR SALE

2012 JD 8310R C/A MFD Powershift w/Duals. 1929 Hrs.
2012 JD 6170R C/A MFD 20-Spd P.Quad w/Duals 746 Hrs.
2012 JD 7260R C/A MFD IVT 750 Hrs.
2015 JD S670 4WD Combine 96/191 Hrs.
2000 7810 C/A 2WD w/JD 725 Loader 637 Hrs. 1-Owner
2016 6155R C/A MFD w/TLS 2-Spd P.Quad w/JD 640R Loader 300 Hrs.
2015 JD 6145R C/A MFD 20-Spd P.Quad 772 Hrs.